



Bartlett High School Panther Playhouse Handbook 2025-2026

Director of Theatre: Kirie Walz
Technical Director: Kevin Rogers
Assistant Theatre Director: Chris Steele
Theatre Assistant: Patrick Ashbee
Musical Director: Matthew Hayner
Choreographer: Cheyenne Dyer

Welcome Letter

Course Offerings

Audition Procedures

Cast & Crew Member Expectations

Bartlett Theatre and Forensics Boosters

Panther Playhouse Faculty and Staff

International Thespian Society

25-26 Event Calendar

WELCOME

We are so excited for you to join the Panther Playhouse Family! Each production is unique and we are excited to create and collaborate with you this school year!

To Panther Playhouse Parents:

Welcome to one of the most rewarding programs available to your student! The theatre program at Bartlett High School offers a wide range of theatre opportunities and gives students the chance to develop their craft, learn vital collaboration skills, and provides a safe space for your student's high school years. We strongly believe that there is a place for everyone in our program—whether it is on stage or behind the scenes—and that's true for parents, too! We hope that you share our excitement in creating these phenomenal opportunities for the students. We encourage parents to be active supporters of our efforts through booster club participation, assistance in fundraising, and through volunteer work such as front of house crew, poster day drivers, chaperones, hospitality, and more. We also hope that you will be visible supporters of the students by attending as many performances as possible. This handbook should help orient you and your student to the many different aspects of the Panther Playhouse. Attendance at parent meetings is still advised. The Panther Playhouse produces a calendar kept on our website www.bhspantherplayhouse.org; you'll want to keep it nearby. Feel free to contact any of our faculty members or booster officers for help and remember to come to the meetings to get the latest information about each event.

PREFACE

This handbook describes the Bartlett High School theatre program and its policies, rules, and regulations. Panther Playhouse students and parents are expected to abide by the policies, rules and regulations outlined in this handbook. School rules and policies are enforced at all times that a member is involved in any activity (rehearsal, performance, travel) with the Bartlett theatre program. This handbook, much like any constitution and bylaws, is a living document. As such, this handbook can and will change as the theatre department, school, and community changes. Theatre students are required to follow the policies, rules and regulations of the Bartlett City Schools System and the theatre program. School rules and policies are enforced at all times that a member is directly or indirectly involved in any activity sponsored by or in the name of Bartlett High School. The theatre faculty shall have authority to suspend or amend any theatre policy at any time deemed necessary in the best interest of the overall program.

BHS THEATRE COURSE OFFERINGS

INTRO TO THEATRE

Prerequisite(s): None

This course offers the students a broad overview of the theatre world. Topics discussed include: theatre history, basics of acting, study and analysis of theatrical literature, and basic information regarding technical theatre. Students will increase their understanding of theatre as an art form. As part of the course requirements, students will be required to attend and critique live theatrical performances that occur outside class time.

INTRO TO THEATRE HONORS (only offered at 9th Grade Academy)

Prerequisite(s): Audition/Interview in Spring of 8th grade year

This course offers the students a broad overview of the theatre world. Topics discussed include: theatre history, basics of acting, study and analysis of theatrical literature and basic information regarding technical theatre. Students will increase their understanding of theatre as an art form. As part of the course requirements, students will be required to attend and critique live theatrical performances that occur outside of class time. This course will also require co-curricular after school/weekend hours devoted to the Panther Playhouse.

THEATRE II HONORS: ACTING & TECHNICAL THEATRE

Prerequisite(s): Intro to Theatre

Honors Contract signed by parent and student

This course will provide an in depth exploration of theatrical performance, technical theatre, and the theatre production process. Students will learn basic acting skills such as: improvisation, characterization, preparing a role and stage movement. Students will also learn about theatre design research and principles, scene shop organization, painting and construction techniques, equipment use and maintenance, sound and lighting design, costume design and construction, theatre management, theatre safety, and the function of technical stage personnel in production work. This course will require after school and weekend commitments. As part of the course requirements, students will be required to attend and critique live theatrical performances that occur outside class time. This course will also require co-curricular after school/weekend hours devoted to the Panther Playhouse.

THEATRE PRODUCTION WORKSHOP HONORS

Prerequisite(s): Acting Honors or Technical Theatre Honors

Honors Contract signed by parent and student w Application

This course will study the real practices of performance, managerial, and technical theatre. Students will create and produce theatrical events and will comprise the entirety of the production team. Topics include fundamental practices, principles, and techniques associated with producing plays of various periods and styles. Production work may consist of the following: acting, carpentry, costumes, makeup, painting, lighting, sound, props, and stage management. Students will be required to participate in all Panther Playhouse mainstage productions in some capacity. This course may be taken multiple years.

AUDITION PROCEDURES

Audition information will be posted on the BHS Panther Playhouse website at least two weeks before auditions. Depending on the needs of the show, audition materials and preparation may vary.

When auditioning for any show, students and parents should always examine the script to ensure that each individual/family is comfortable with the content and demands of the show. If you would like to review the material before making the decision to participate, you can check out a script from the director. By auditioning for the show, you are agreeing to perform the content of the script as written. If you have any questions or concerns, please feel free to contact the director.

Listed below are some examples of common audition formats we use at the BHS Panther Playhouse:

- Cold Reading: perform scenes from the play that are distributed at auditions
- Singing: prepare 16-32 bars from the show
- Monologue: prepare a short monologue from prescribed material
- Dance: group movement/dance combination taught in a large group and performed in smaller groups

The audition information on the website will clearly state what to prepare and it is expected for auditionees to adhere to the guidelines. Failure to adequately prepare the correct material will impact the outcome of casting decisions.

All auditions will be adjudicated by the entire directorial team including the director, assistant director, musical director, technical director, and designers. Most initial auditions will be closed – meaning only the auditionee and the directorial team will be present.

Dance auditions and call backs are typically held in a group setting and auditionees will perform in front of each other.

AUDITION TIPS

- Breathe! Take a moment to center yourself before you begin.
- Be Prepared! Rehearse your audition piece out loud! Many times!
- Be Positive! Think of your audition as a job interview. First impressions are important!
- Wear proper audition attire. You wouldn't wear jeans and a t-shirt to a job interview.
- Make sure your hair is out of your face.
- Be willing! You may be asked to try new things! Even if you aren't sure about it, TRY!

CALLBACKS

A callback means that the director would like to see an actor again, perhaps to hear them read or sing from the script or see them next to another actor. Receiving a callback does not guarantee you a part in the show, and not receiving one doesn't necessarily mean you won't be cast.

Callbacks are by invitation only. After initial auditions are complete, auditionees will be notified either by e-mail or a callback list will be posted on the BHS Panther Playhouse website.

Casting

The directorial team spends many hours to arrive at the final cast list for a production. All students and parents are asked to respect the directorial team's decisions and trust their vision for the production. It is expected that you carry yourself in a respectful, professional manner regarding casting decisions.

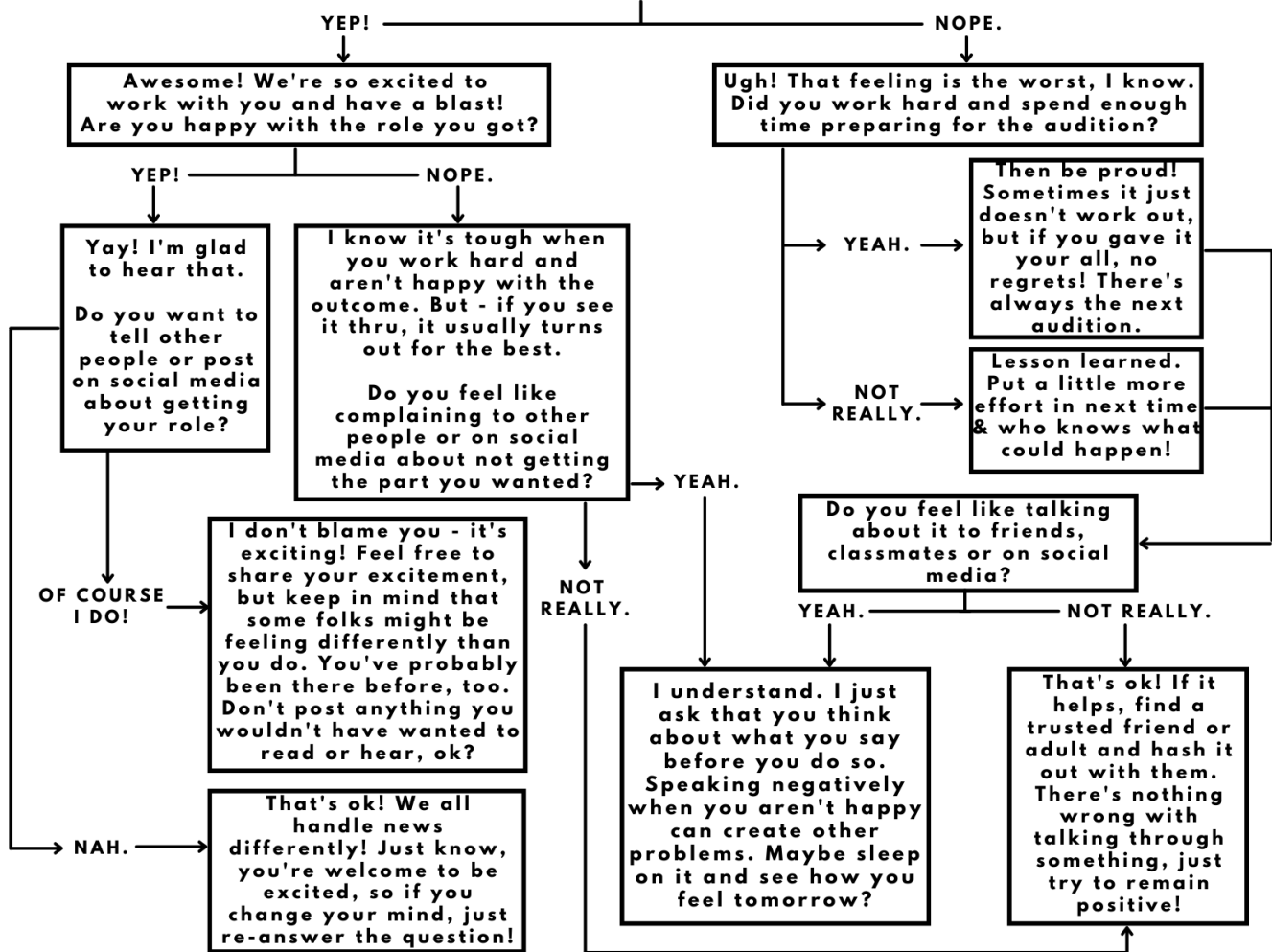
Every person in the theatre industry experiences rejection at one time or another. And that's okay! Ultimately, rejection doesn't define you or your ability to be successful.

Be sure to check out our cast list flow chart on the next page! It's a great reminder/guide to refer to after the cast list is posted.

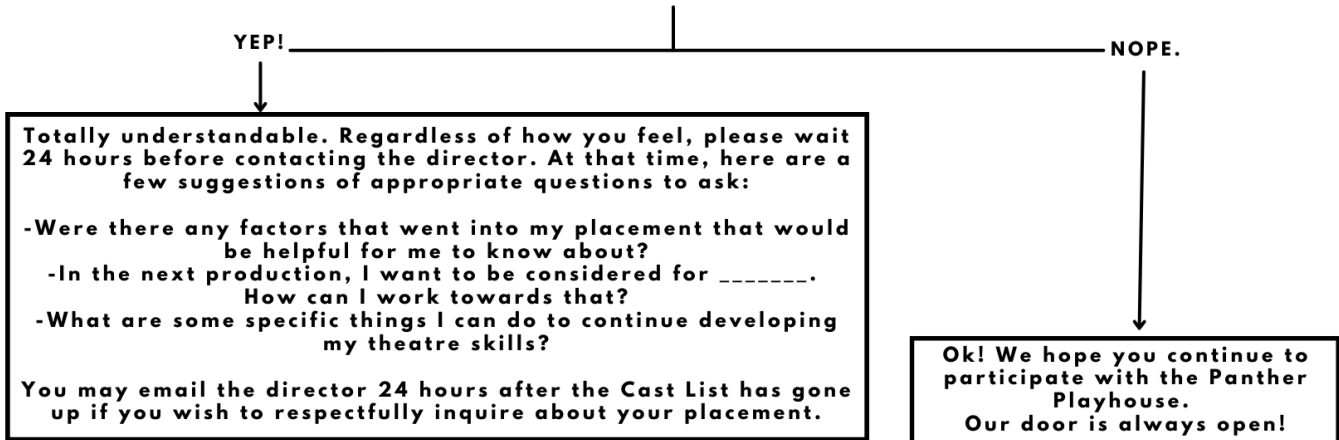


The Cast List Flow Chart

DID I GET INTO THE CAST?



DO YOU WANT TO TALK TO THE DIRECTOR(S) ABOUT THE DECISIONS?



CAST AND CREW MEMBER EXPECTATIONS

Once a student has been cast in a show or assigned to a crew, students are expected to follow the guidelines listed below.

Attendance

Every theatre production is a total team effort from the first read thru to opening night. There are NO unimportant jobs as the smallest detail left undone can cause the demise of the most exceptional projects. Every cast and crew member is dependent on one another to complete their jobs and attendance for all rehearsal, workdays, and performances are mandatory. **If you have conflicts with the rehearsal schedule please clearly communicate those on your audition form or tech crew application. ONLY CONFLICTS DUE TO BHS SCHOOL SPONSORED EVENTS OR PRE-SCHEDULED DOCTOR APPOINTMENTS WILL BE HONORED.** If students are ill and will not be able to attend rehearsal, the director and stage management must be notified as soon as possible. Removal from the cast will occur if any cast member accumulates two unexcused absences from rehearsal or work days. **An unexcused absence from a tech/dress rehearsal or performance will result in immediate removal from the show.**

Additionally, it is expected that all cast and crew members are picked up from rehearsals and performances in a timely manner. It is the student's responsibility to ensure they have communicated their schedule with parents and have arranged to be off campus by the end of all rehearsals and performances. Failure to do so may result in expulsion from the cast.

Rehearsal Dress

Rehearsal dress is required for every rehearsal we hold at the Panther Playhouse. Please make sure you have the below items for every rehearsal.

Girls

- Solid colored leotard, tank top or shirt
- Slim fitting leggings or dark shorts
- Closed-toe shoes
- Hair in French Braid or pony-tail

Boys

- Solid colored t-shirt
- Solid colored sweat pants, athletic shorts, joggers. (Jeans and khakis are not acceptable)
- Closed-toe shoe

Grade Expectations

All cast and crew members are expected to maintain a C average in all classes. It is expected that all homework and class work is completed to the best of your ability. Failure to maintain grades may result in expulsion from the show.

Behavior Expectations

Students are expected to behave in a **respectful** and **professional** manner towards all faculty members, cast, and crew members. Disrespect and dishonesty will not be tolerated. Failure to act in a respectful and professional manner will result in removal from the show.

Social Media Policy

You are responsible for the content you post on social media and emails. Remember to obey the law at all times. What you publish online will be available to the public for a long time. Wherever you are and whatever devices you are using, be respectful of your peers, our faculty members, our theatre patrons, and volunteers. Do not post text or images about the Panther Playhouse students, faculty, guests or patrons, volunteers, or others – that are:

- Sexually explicit
- Profane
- Threatening
- Disparaging to employees, students, patrons, or volunteers
- Harassing or bullying
- Intimidating
- Defamatory

In short, you should not post anything that could result in the creating of a hostile work environment. Similarly, you should not use social media to publish posts that are intended to cause harm to someone's reputation – including the Panther Playhouse or Bartlett High School.

Cast Member Media Release

By accepting a role in the production, all cast and crew members and guardians agree to cast and crew members being photographed and/or video recorded during rehearsals and performances and the use of the cast and crew member's likeness for broadcast or for use in any or all publicity and/or marketing efforts on behalf of the Panther Playhouse.

Financial Obligations

The Bartlett Board of Education has approved a participation fee of up to \$150 for theatre activities. Students and parents will be notified of each show's participation fee before auditions are held. The participation fee for each show will be adjusted to match the production costs, but will not exceed \$150.

Per the BCS Chief Financial Officer, students cannot apply funds raised from a school or booster fundraiser towards their individual fees. Funds raised from certain fundraisers sponsored by the BHS Panther Playhouse or the Bartlett Theatre and Forensics Boosters may be used to offset **all** student fees **equally** for a production. Students and parents will be informed which fundraisers will be used to offset student fees.

General Rehearsal Rules

1. Be present at all scheduled rehearsals where your attendance is required. Failure to attend rehearsal, work days, or performances will result in your expulsion from the show.
2. Be on time. Rehearsals will start on time.
3. All rehearsals are closed. Do not bring friends or relatives without the director's approval
4. Do not talk while rehearsal is in progress. If you are not being utilized, you should work on homework or work on lines quietly.
5. Be ready and on stage for all entrances.
6. No gum on stage!
7. No talking backstage and keep the backstage area clean.
8. Bring your script and a pencil to all rehearsals.
9. Contact the director ahead of time if a conflict arises that will cause you to be late or to miss a rehearsal.
10. Use of cell phones during rehearsals and performances is strictly prohibited.
11. The directors have the final prerogative in all matters affecting the show. Their decisions are final and binding. Cast and crew members agree to accept those decisions in a positive manner.

BARTLETT THEATRE AND FORENSICS BOOSTERS

The Bartlett Theatre and Forensics Booster Club is the parent organization that helps to support the BHS Panther Playhouse and its productions through fundraising and volunteering of their time. All parents are encouraged to attend booster meetings and volunteer at booster sponsored events.

2025-2026 BTFB Board

President – Lindsay Keegan

Vice President – Kim Lemmon

Treasurer – Amy Rodgers

Secretary – Brandi Brock

Parliamentarian – Elizabeth Lear

Member at Large – Tricia Oldham

Forensics Liaison – Scott Oldham

Media Specialist – Lashona Taylor

Faculty Advisors - Kevin Rogers & Kirie Walz

2025-2026 Meeting Dates

General meetings will take place on the following dates:

August 26 6:00 pm BHS Auditorium

October 21 6:00 pm Zoom Mtg

January 6 6:00 pm BHS Auditorium

Panther Playhouse Faculty and Staff

Kirie Walz – Director of Theatre

Mrs. Walz earned a BFA in Theatre Performance from the University of Memphis. After college, Mrs. Walz taught at Germantown High School for nine years, before coming to Bartlett High School. In 2019, the Panther Playhouse's production of *Pippin* received the award for Outstanding Overall Production at the Orpheum High School Musical Theatre Awards and Mrs. Walz received the award for Outstanding Direction by a Teacher. She has worked at several theatres in the Memphis area including Theatre Memphis and Playhouse On the Square. She has received Ostrander awards for Leading Actress in a Musical in the U of M's production of *The Mystery of Edwin Drood* and in Theatre Memphis' production of *Annie Get Your Gun* and was recently nominated for Best Featured Performer in a Musical for her role in *Hairspray* at Theatre Memphis. Other favorite productions include *Elegies: A Song Cycle*, *Big River*, *Assassins*, *Noises Off*, *Parade* and *Aida*. Mrs. Walz currently teaches Intro to Theatre Honors and Standard at the Ninth Grade Academy, as well as Production Workshop Honors, and Acting Honors at Bartlett High School.

Kevin Rogers – Technical Director

Mr. Rogers is currently in his 15th year at Bartlett High School serving as the Technical Director for the Panther Playhouse and the Director of Forensics. He graduated from Harding University BA in Theatre and Oral Communication. He serves as the District I Director for the Tennessee High School Speech and Drama League and is on the National Speech and Debate Association District Committee for Tennessee. In 2016, he was named a WREG News Channel 3 and Tennessee Education Lottery Educator of the Week. He also received the 2017-2018 THSSDL Krider Award for Outstanding Speech and Drama Educator of the Year. In 2022, he was inducted into the THSSDL Hall of Fame. He is also a local theatre artist having been the lighting designer for productions at Germantown Community Theatre, the Harrell Theatre, and Desoto Family Theatre where he was nominated for an Allie Award for Outstanding Lighting Design for *The Lion*, *the Witch*, and *the Wardrobe*.

Chris Steele – Assistant Theatre Director

Chris Steele has been teaching English at Bartlett for over 20 years and loves it. She has a degree in speech and theatre and has enjoyed working with the students in the Panther Playhouse over the past few years. Previous credits include: *East Lynne* (Show Girl), *And Then There Were None* (Vera Claythorne) and *To Kill a Mockingbird* (Miss Maude). She loves to perform and direct. "It is so much more fun to work with such amazing talent."

Patrick Ashbee – Theatre Assistant

Mr. Ashbee teaches film and television at Bartlett High School where he oversees the campus television studio. He earned bachelor degrees in Theatre and Cinema from the University of Iowa and a masters in screenwriting from Hollins University. Before coming to Bartlett, Mr. Ashbee worked on Arlington and Germantown High School's theatrical productions as a director and/or sound designer. In the community, you can usually find Mr. Ashbee on the stage, where he has performed at Theatre Memphis, Hattiloo Theatre, Germantown Community Theatre, and the Harrell Theatre. Favorite production credits include *A Raisin in the Sun* (Mr. Lindner), *The Fantasticks* (director), *Into the Woods* (associate director), *The Puzzle Locker* (Squirrel), and *Orson Welles Is Dead* (writer/director).

CHEYENNE DYER - CHOREOGRAPHER

Mrs. Dyer is a Memphis native who received her Bachelor of Fine Arts in Theatre with a concentration in dance from the University of Memphis in 2018 and an M.Ed in secondary education (English) from Grand Canyon University in 2021. She is also an alum of Bartlett High School (2014). With twenty years of experience, Mrs. Dyer's love of teaching dance began at an early age from assisting at the age of twelve at the Dance Academy of Bartlett (DAB) to teaching classes beginning at the age of sixteen. Her experience encompasses various cities such as Oklahoma City, New York City, and her hometown Memphis, Tennessee. From Tap to Ballet and Jazz to Hip Hop, she has trained with professionals from all over the world while also studying their pedagogy to increase her knowledge in the field. Mrs. Dyer has received awards such as most prestigious dancer and choreographer, most innovative tap dancer and teacher, and most inspirational dancer and scholarships as well. Her past employment includes being an assistant choreographer for the High School Musical Theatre Awards (HSMTAs) and taught for their 2018 summer camp and various field trips. Currently, she serves on the board as Sergeant at Arms and chair of the Junior Ambassador program of the Southern Association of Dance Masters, is an English teacher here at Bartlett High School, and teaches dance at Joy McDaniel Academy of Dance and Gymnastics (JMAD).

Matthew Hayner - Musical Director

Mr. Hayner was named Choral Director at Bartlett High School in 2021. Mr. Hayner most recently served as Choir Director at Germantown High School. Prior to that he served on the voice faculties of Rhodes College and Lausanne Collegiate School. Mr. Hayner received a Master of Music degree from The University of Memphis, where he studied with Mr. Evan Jones. He received his Bachelor's degrees from Bowling Green State University in Music Education and Performance. In the summer of 2009, Mr. Hayner studied at the Franz Schubert Institute in Baden, Austria. He was fortunate to learn from esteemed artists such as Elly Ameling, Robert Holl, Helmut Deutsch, Julius Drake, Wolfram Rieger, Rudolf Piernay, and Edith Wiens. As a singer, his operatic repertoire includes roles from *Tartuffe*, *Idomeneo*, *The Old Maid and the Thief*, *L'incoronazione di Poppea*, *Don Quichotte auf der Hochzeit des Comacho*, *The Pirates of Penzance*, *Così fan tutte*, *Die Zauberflöte*, and the North American premiere of *Cavalli's La virtù de' Strali d'Amore* at Eastman School of Music. He also performs frequently with the Memphis Symphony and Rhodes College Mastersingers- most recently in *Brubeck's To Hope*, *Mozart's Requiem*, *CPE Bach's Magnificat*, *Bach's B Minor Mass*, *Vaughan Williams' Serenade to Music*, *Handel's Israel in Egypt*, and *Faure's Requiem*. Mr. Hayner is a founding member of *BealeCanto*, a premier men's chamber ensemble comprised of professional musicians and educators in the Memphis area. He is also an active member of the Mississippi River Chorale, ACDA, and the National Association of Teachers of Singing (NATS).

International Thespian Society

The International Thespian Society is the only theatre honor society for middle and high school students in the United States. Affiliation brings credibility and distinction to students, theatre programs, and schools. It is a visible, positive symbol of the quality of our theatre program.

Bartlett High School is home to Troupe 3618. Students must work on two mainstage productions in order to be invited for induction. The induction fee is \$40.

Active Thespians must meet the following requirements to maintain membership:

- Participate in all productions (cast or crew) and thespian activities
- Participate in all thespian fundraisers
- Attend all thespian meetings
- Maintain a "C" average in all classes
- No ISS or OSS – any member receiving ISS or OSS will have their membership up for review
- Pay annual dues of \$25 at the beginning of each school year

Seniors in good standing will receive a blue and gold honor cord to wear at graduation.

25-26 Student Officers

President: Morgan Malone

Vice President: Anora Moyer

Secretary: Adalee Walker

Treasurer: Brylee Harber

Historians: Alyssa McNinch

Sponsor: Kirie Walz



Event Schedule 2025-2026

August

25-29	2:15-4:30	Clue Auditions
26	6:00 pm	BTFB Parent Meeting

September

2	2:15	Clue Rehearsals Begin
---	------	-----------------------

October

27-31	2:15pm-6pm	Clue Tech Rehearsals
-------	------------	----------------------

November

3-6	2:15pm-7pm	Clue Dress Rehearsals
7-8	5:30pm-10pm	Clue Performance
9	12:30pm-5pm	Clue Matinee Performance
13-15	5:30pm-10pm	Clue Performance
17-21	2:15-5pm	Prince of Egypt Auditions

December

1	2:15	Prince of Egypt Rehearsals Begin
13	9-11 am	Breakfast with Santa

February

10-14	2:15-6pm	Prince of Egypt Tech Rehearsals
16-19	3:30-8:30pm	Prince of Egypt Dress Rehearsals
20-21	5:30-10pm	Prince of Egypt Performance
22	12:30-5pm	Prince of Egypt Matinee Performance
26-28	5:30-10pm	Prince of Egypt Performance

April

17	6pm	Broadway Dessert Theatre
28	6pm	Theatre Banquet/Thespian Inductions

CLUE PRODUCTION SCHEDULE

Monday	Tuesday	Wednesday	Thursday	Friday	Saturday	Sunday
SEPTEMBER						
	2 2:15-4:30 Rehearsal	3 2:15-4:30 Rehearsal	4 2:15-4:30 Rehearsal	5 2:15-4:30 Rehearsal	6 OFF	7 OFF
8 2:15-5:00 Rehearsal	9 2:15-5:00 Rehearsal	10 2:15-5:00 Rehearsal	11 2:15-5:00 Rehearsal	12 2:15-5:00 Rehearsal	13 OFF	14 OFF
15 2:15-5:00 Rehearsal	16 2:15-5:00 Rehearsal	17 2:15-5:00 Rehearsal	18 2:15-5:00 Rehearsal	19 2:15-5:00 Rehearsal	20 OFF	21 OFF
22 2:15-5:00 Rehearsal	23 2:15-5:00 Rehearsal	24 2:15-5:00 Rehearsal	25 2:15-5:00 Rehearsal	26 2:15-5:00 Rehearsal	27 OFF	28 OFF
29 2:15-5:00 Rehearsal	30 2:15-5:00 Rehearsal					
OCTOBER						
		1 2:15-5:00 Rehearsal	2 2:15-5:00 Rehearsal	3 2:15-5:00 Rehearsal	4 OFF	5 OFF
6 2:15-5:00 Rehearsal	7 2:15-5:00 Rehearsal	8 2:15-5:00 Rehearsal	9 2:15-5:00 Rehearsal	10 2:15-5:00 Rehearsal	11 OFF	12 OFF
FALL BREAK OFF	FALL BREAK OFF	FALL BREAK OFF	FALL BREAK OFF	FALL BREAK OFF	FALL BREAK OFF	FALL BREAK OFF
20 2:15-5:00 Rehearsal	21 2:15-5:00 Rehearsal	22 2:15-5:00 Rehearsal	23 2:15-5:00 Rehearsal	24 2:15-5:00 Rehearsal	25 9:00-12:00 PM WORK DAY	26 OFF
27 2:15-6:00 Tech Rehearsal	28 2:15-6:00 Tech Rehearsal	29 2:15-6:00 Tech Rehearsal	30 2:15-6:00 Tech Rehearsal	31 2:15-6:00 Tech Rehearsal		
NOVEMBER						
					1 9:00-12:00 PM WORK DAY	2 OFF
3 2:15-7:00 Dress Rehearsal	4 2:15-7:00 Dress Rehearsal	5 2:15-7:00 Dress Rehearsal	6 2:15-7:00 Dress Rehearsal	OPENIG NIGHT 7 Call:5:30 Performance:7:00	8 Call:5:30 Performance:7:00	9 Call:12:30 Performance:2:00
10	11	12	13 Call:5:30 Performance:7:00	14 Call:5:30 Performance:7:00	CLOSING NIGHT 15 Call:5:30 Performance:7:00	16

PRINCE OF EGYPT PRODUCTION CALENDAR

Monday	Tuesday	Wednesday	Thursday	Friday	Saturday	Sunday
DECEMBER						
1 2:15-5:30 Rehearsal	2 2:15-5:30 Rehearsal	3 2:15-5:30 Rehearsal	4 2:15-5:30 Rehearsal	5 2:15-5:30 Rehearsal	6 OFF	7 OFF
8 2:15-5:30 Rehearsal	9 2:15-5:30 Rehearsal	10 2:15-5:30 Rehearsal	11 2:15-5:30 Rehearsal	12 2:15-5:30 Rehearsal	13 OFF	14 OFF
15 2:15-5:30 Rehearsal	16 2:15-5:30 Rehearsal					
JANUARY						
	1st Day Q3 6 2:15-5:30 Rehearsal	7 2:15-5:30 Rehearsal	8 2:15-5:30 Rehearsal	9 2:15-5:30 Rehearsal	10 OFF	11 OFF
12 2:15-5:30 Rehearsal	13 2:15-5:30 Rehearsal	14 2:15-5:30 Rehearsal	15 2:15-5:30 Rehearsal	16 2:15-5:30 Rehearsal	17 OFF	18 OFF
19 OFF	20 2:15-5:30 Rehearsal	21 2:15-5:30 Rehearsal	22 2:15-5:30 Rehearsal	23 2:15-5:30 Rehearsal	24 OFF	25 OFF
26 2:15-5:30 Rehearsal	27 2:15-5:30 Rehearsal	28 2:15-5:30 Rehearsal	29 2:15-5:30 Rehearsal	30 2:15-5:30 Rehearsal	31 OFF	
FEBRUARY						
2 2:15-5:30 Rehearsal	3 2:15-5:30 Rehearsal	4 2:15-5:30 Rehearsal	5 2:15-5:30 Rehearsal	6 2:15-5:30 Rehearsal	7 9-12 Work Day	8 OFF
9 2:15-6:00 Tech Rehearsal	10 2:15-6:00 Tech Rehearsal	11 2:15-6:00 Tech Rehearsal	12 2:15-6:00 Tech Rehearsal	13 2:15-6:00 Tech Rehearsal	14 9-3PM Costume Parade/Work Day	15 1-5pm Wandelprobe
16 3:30-8:30 Dress Rehearsal	17 3:30-8:30 Dress Rehearsal	18 3:30-8:30 Dress Rehearsal	19 3:30-8:30 Dress Rehearsal	20 5:30pm Call 7pm Performance	21 5:30pm Call 7pm Performance	22 12:30 Call 2pm Performance
23	24	25	26 5:30pm Call 7pm Performance	27 5:30pm Call 7pm Performance	28 5:30pm Call 7pm Performance	

25-26 Handbook Contract

Students who plan to participate in any production throughout the school year will need to have this contract signed annually. Please submit this page to Mrs. Walz.

I have read and agree to abide by the procedures outlined in the Panther Playhouse Handbook. I understand that non-compliance of the procedures listed in this document will be dealt with in accordance with Panther Playhouse policy.

Student Name (please print): _____

Student Signature: _____ Date: _____

Parent Name (please print): _____

Parent Signature: _____ Date: _____