



# **Bartlett High School Panther Playhouse Handbook 2023-2024**

Director of Theatre: Kirie Walz  
Technical Director: Kevin Rogers  
Assistant Technical Director: Catie Ward  
Assistant Theatre Director: Chris Steele  
Musical Director: Matthew Hayner  
Choreographer: Cheyenne Dyer

**Welcome Letter**

**Course Offerings**

**Audition Procedures**

**Cast & Crew Member Expectations**

**Bartlett Theatre and Forensics Boosters**

**Panther Playhouse Faculty and Staff**

**International Thespian Society**

**23-24 Event Calendar**

## **WELCOME**

We are so excited for you to join the Panther Playhouse Family! Each production is unique and we are excited to create and collaborate with you this school year!

To Panther Playhouse Parents:

Welcome to one of the most rewarding programs available to your student! The theatre program at Bartlett High School offers a wide range of theatre opportunities and gives students the chance to develop their craft, learn vital collaboration skills, and provides a safe space for your student's high school years. We strongly believe that there is a place for everyone in our program—whether it is on stage or behind the scenes—and that's true for parents, too! We hope that you share our excitement in creating these phenomenal opportunities for the students. We encourage parents to be active supporters of our efforts through booster club participation, assistance in fundraising, and through volunteer work such as front of house crew, poster day drivers, chaperones, hospitality, and more. We also hope that you will be visible supporters of the students by attending as many performances as possible. This handbook should help orient you and your student to the many different aspects of the Panther Playhouse. Attendance at parent meetings is still advised. The Panther Playhouse produces a calendar kept on our website [www.bhspantherplayhouse.org](http://www.bhspantherplayhouse.org); you'll want to keep it nearby. Feel free to contact any of our faculty members or booster officers for help and remember to come to the meetings to get the latest information about each event.

## **PREFACE**

This handbook describes the Bartlett High School theatre program and its policies, rules, and regulations. Panther Playhouse students and parents are expected to abide by the policies, rules and regulations outlined in this handbook. School rules and policies are enforced at all times that a member is involved in any activity (rehearsal, performance, travel) with the Bartlett theatre program. This handbook, much like any constitution and bylaws, is a living document. As such, this handbook can and will change as the theatre department, school, and community changes. Theatre students are required to follow the policies, rules and regulations of the Bartlett City Schools System and the theatre program. School rules and policies are enforced at all times that a member is directly or indirectly involved in any activity sponsored by or in the name of Bartlett High School. The theatre faculty shall have authority to suspend or amend any theatre policy at any time deemed necessary in the best interest of the overall program.

## **BHS THEATRE COURSE OFFERINGS**

### **INTRO TO THEATRE**

Prerequisite(s): None

This course offers the students a broad overview of the theatre world. Topics discussed include: theatre history, basics of acting, study and analysis of theatrical literature, and basic information regarding technical theatre. Students will increase their understanding of theatre as an art form. As part of the course requirements, students will be required to attend and critique live theatrical performances that occur outside class time.

### **INTRO TO THEATRE HONORS** (only offered at 9<sup>th</sup> Grade Academy)

Prerequisite(s): Audition/Interview in Spring of 8<sup>th</sup> grade year

This course offers the students a broad overview of the theatre world. Topics discussed include: theatre history, basics of acting, study and analysis of theatrical literature and basic information regarding technical theatre. Students will increase their understanding of theatre as an art form. As part of the course requirements, students will be required to attend and critique live theatrical performances that occur outside of class time. This course will also require co-curricular after school/weekend hours devoted to the Panther Playhouse.

### **ACTING HONORS**

Prerequisite(s): Intro to Theatre

Honors Contract signed by parent and student

This course will provide an introduction to theatrical performance. Students will learn basic acting skills such as: improvisation, characterization, preparing a role, and stage movement. Students will explore practical and theoretical approaches to acting. This course will require after school and weekend commitments. As part of the course requirements, students will be required to attend and critique live theatrical performances that occur outside class time. This course will also require co-curricular after school/weekend hours devoted to the Panther Playhouse.

### **TECHNICAL THEATRE HONORS**

Prerequisite(s): Intro to Theatre

Honors Contract signed by parent and student

This course is an exploration of the technical side of production. Topics covered will include design research and principles, scene shop organization, painting and construction techniques, equipment use and maintenance, sound and lighting design, costume and design, theatre management, theatre safety, and the function of technical stage personnel in production work. This course will incorporate academic study and hands-on application. As part of the course requirements, students will be required to attend and critique live theatrical performances that occur outside class time. This course will also require co-curricular after school/weekend hours devoted to the Panther Playhouse.

### **THEATRE PRODUCTION WORKSHOP HONORS**

Prerequisite(s): Acting Honors or Technical Theatre Honors

Honors Contract signed by parent and student w Application

This course will study the real practices of performance, managerial, and technical theatre. Students will create and produce theatrical events and will comprise the entirety of the production team. Topics include fundamental practices, principles, and techniques associated with producing plays of various periods and styles. Production work may consist of the following: acting, carpentry, costumes, makeup, painting, lighting, sound, props, and stage management. Students will be required to participate in all Panther Playhouse mainstage productions in some capacity. This course may be taken multiple years.

## **AUDITION PROCEDURES**

Audition information will be posted on the BHS Panther Playhouse website at least two weeks before auditions. Depending on the needs of the show, audition materials and preparation may vary.

When auditioning for any show, students and parents should always examine the script to ensure that each individual/family is comfortable with the content and demands of the show. If you would like to review the material before making the decision to participate, you can check out a script from the director. By auditioning for the show, you are agreeing to perform the content of the script as written. If you have any questions or concerns, please feel free to contact the director.

Listed below are some examples of common audition formats we use at the BHS Panther Playhouse:

- Cold Reading: perform scenes from the play that are distributed at auditions
- Singing: prepare 16-32 bars from the show
- Monologue: prepare a short monologue from prescribed material
- Dance: group movement/dance combination taught in a large group and performed in smaller groups

The audition information on the website will clearly state what to prepare and it is expected for auditionees to adhere to the guidelines. Failure to adequately prepare the correct material will impact the outcome of casting decisions.

All auditions will be adjudicated by the entire directorial team including the director, assistant director, musical director, technical director, and designers. Most initial auditions will be closed – meaning only the auditionee and the directorial team will be present.

Dance auditions and call backs are typically held in a group setting and auditionees will perform in front of each other.

### **AUDITION TIPS**

- Breathe! Take a moment to center yourself before you begin.
- Be Prepared! Rehearse your audition piece out loud! Many times!
- Be Positive! Think of your audition as a job interview. First impressions are important!
- Wear proper audition attire. You wouldn't wear jeans and a t-shirt to a job interview.
- Make sure your hair is out of your face.
- Be willing! You may be asked to try new things! Even if you aren't sure about it, TRY!

## **CALLBACKS**

A callback means that the director would like to see an actor again, perhaps to hear them read or sing from the script or see them next to another actor. Receiving a callback does not guarantee you a part in the show, and not receiving one doesn't necessarily mean you won't be cast.

Callbacks are by invitation only. After initial auditions are complete, auditionees will be notified either by e-mail or a callback list will be posted on the BHS Panther Playhouse website.

## **Casting**

The directorial team spends many hours to arrive at the final cast list for a production. All students and parents are asked to respect the directorial team's decisions and trust their vision for the production. It is expected that you carry yourself in a respectful, professional manner regarding casting decisions.

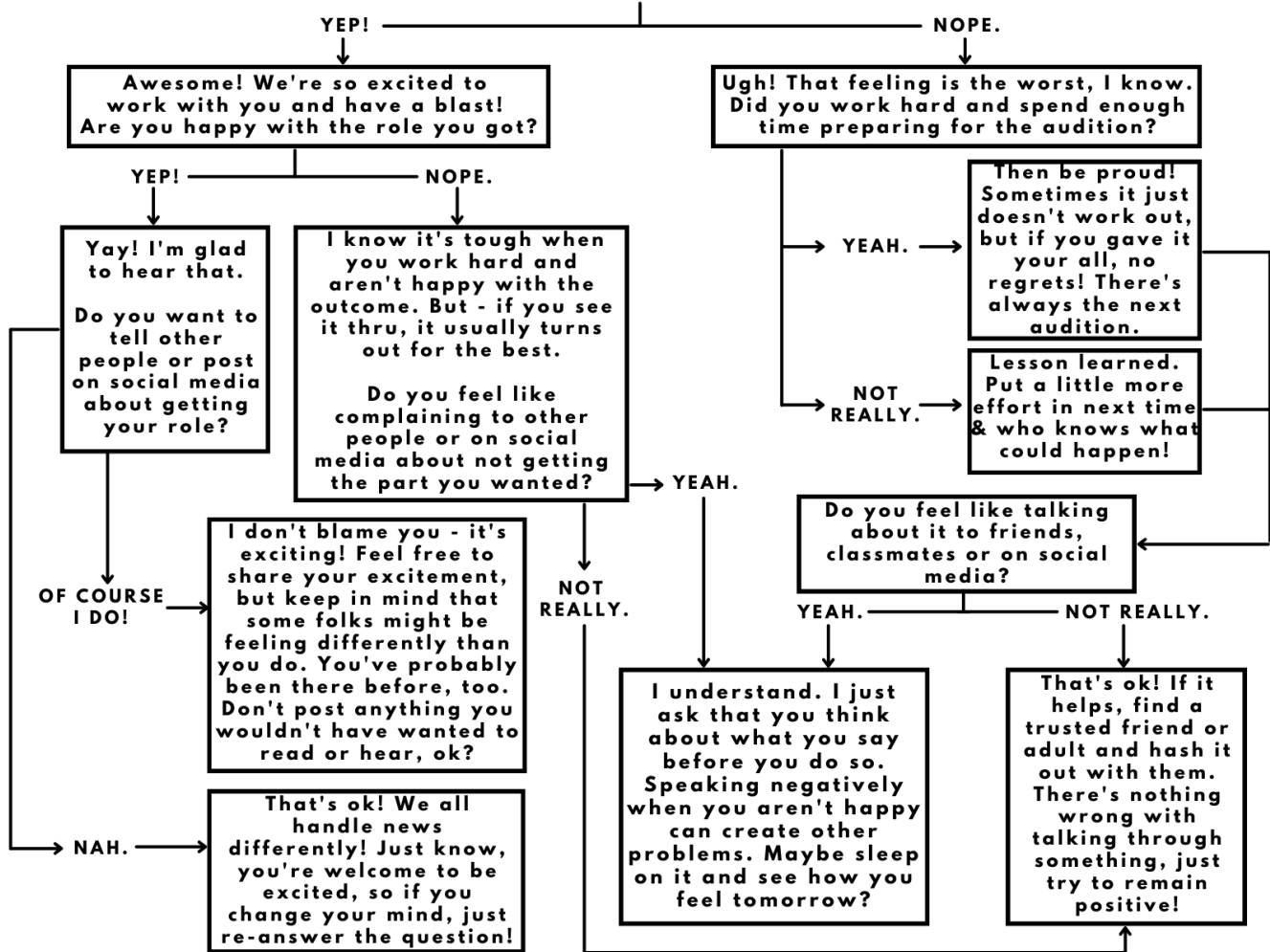
Every person in the theatre industry experiences rejection at one time or another. And that's okay! Ultimately, rejection doesn't define you or your ability to be successful.

Be sure to check out our cast list flow chart on the next page! It's a great reminder/guide to refer to after the cast list is posted.

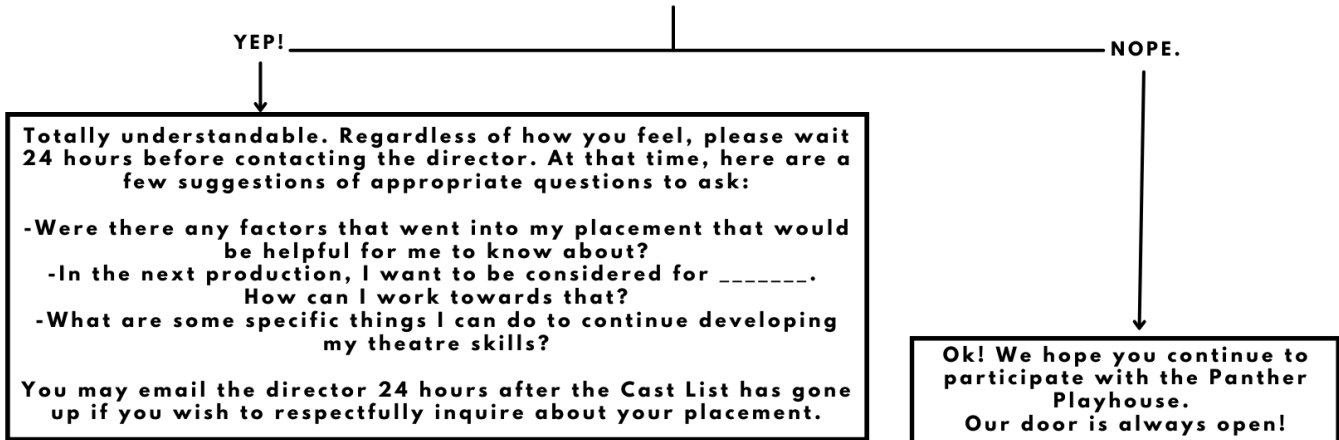


# The Cast List Flow Chart

## DID I GET INTO THE CAST?



## DO YOU WANT TO TALK TO THE DIRECTOR(S) ABOUT THE DECISIONS?





## CAST AND CREW MEMBER EXPECTATIONS

Once a student has been cast in a show or assigned to a crew, students are expected to follow the guidelines listed below.

### Attendance

Every theatre production is a total team effort from the first read thru to opening night. There are NO unimportant jobs as the smallest detail left undone can cause the demise of the most exceptional projects. Every cast and crew member is dependent on one another to complete their jobs and attendance for all rehearsal, workdays, and performances are mandatory. **If you have conflicts with the rehearsal schedule please clearly communicate those on your audition form or tech crew application. ONLY CONFLICTS DUE TO BHS SCHOOL SPONSORED EVENTS OR PRE-SCHEDULED DOCTOR APPOINTMENTS WILL BE HONORED.** If students are ill and will not be able to attend rehearsal, the director and stage management must be notified as soon as possible. Removal from the cast will occur if any cast member accumulates two unexcused absences from rehearsal or work days. **An unexcused absence from a tech/dress rehearsal or performance will result in immediate removal from the show.**

Additionally, it is expected that all cast and crew members are picked up from rehearsals and performances in a timely manner. It is the student's responsibility to ensure they have communicated their schedule with parents and have arranged to be off campus by the end of all rehearsals and performances. Failure to do so may result in expulsion from the cast.

### Rehearsal Dress

Rehearsal dress is required for every rehearsal we hold at the Panther Playhouse. Please make sure you have the below items for every rehearsal.

#### Girls

- Solid colored leotard, tank top or shirt
- Slim fitting leggings or dark shorts
- Closed-toe shoes
- Hair in French Braid or pony-tail

#### Boys

- Solid colored t-shirt
- Solid colored sweat pants, athletic shorts, joggers. (Jeans and khakis are not acceptable)
- Closed-toe shoe

### **Grade Expectations**

All cast and crew members are expected to maintain a C average in all classes. It is expected that all homework and class work is completed to the best of your ability. Failure to maintain grades may result in expulsion from the show.

### **Behavior Expectations**

Students are expected to behave in a **respectful** and **professional** manner towards all faculty members, cast, and crew members. Disrespect and dishonesty will not be tolerated. Failure to act in a respectful and professional manner will result in removal from the show.

### **Social Media Policy**

You are responsible for the content you post on social media and emails. Remember to obey the law at all times. What you publish online will be available to the public for a long time. Wherever you are and whatever devices you are using, be respectful of your peers, our faculty members, our theatre patrons, and volunteers. Do not post text or images about the Panther Playhouse students, faculty, guests or patrons, volunteers, or others – that are:

- Sexually explicit
- Profane
- Threatening
- Disparaging to employees, students, patrons, or volunteers
- Harassing or bullying
- Intimidating
- Defamatory

In short, you should not post anything that could result in the creating of a hostile work environment. Similarly, you should not use social media to publish posts that are intended to cause harm to someone's reputation – including the Panther Playhouse or Bartlett High School.

### **Cast Member Media Release**

By accepting a role in the production, all cast and crew members and guardians agree to cast and crew members being photographed and/or video recorded during rehearsals and performances and the use of the cast and crew member's likeness for broadcast or for use in any or all publicity and/or marketing efforts on behalf of the Panther Playhouse.

### **Financial Obligations**

The Bartlett Board of Education has approved a participation fee of up to \$150 for theatre activities. Students and parents will be notified of each show's participation fee before auditions are held. The participation fee for each show will be adjusted to match the production costs, but will not exceed \$150.

Per the BCS Chief Financial Officer, students cannot apply funds raised from a school or booster fundraiser towards their individual fees. Funds raised from certain fundraisers sponsored by the BHS Panther Playhouse or the Bartlett Theatre and Forensics Boosters may be used to offset **all** student fees **equally** for a production. Students and parents will be informed which fundraisers will be used to offset student fees.

## **General Rehearsal Rules**

1. Be present at all scheduled rehearsals where your attendance is required. Failure to attend rehearsal, work days, or performances will result in your expulsion from the show.
2. Be on time. Rehearsals will start on time.
3. All rehearsals are closed. Do not bring friends or relatives without the director's approval
4. Do not talk while rehearsal is in progress. If you are not being utilized, you should work on homework or work on lines quietly.
5. Be ready and on stage for all entrances.
6. No gum on stage!
7. No talking backstage and keep the backstage area clean.
8. Bring your script and a pencil to all rehearsals.
9. Contact the director ahead of time if a conflict arises that will cause you to be late or to miss a rehearsal.
10. Use of cell phones during rehearsals and performances is strictly prohibited.
11. The directors have the final prerogative in all matters affecting the show. Their decisions are final and binding. Cast and crew members agree to accept those decisions in a positive manner.

## **BARTLETT THEATRE AND FORENSICS BOOSTERS**

The Bartlett Theatre and Forensics Booster Club is the parent organization that helps to support the BHS Panther Playhouse and its productions through fundraising and volunteering of their time. All parents are encouraged to attend booster meetings and volunteer at booster sponsored events.

### **2023-2024 BTFB Board**

President - Elizabeth Lear

Vice President - Tricia Oldham

Treasurer - Laura Mellard (Lindsay Keegan - trainee)

Secretary - LaShona Taylor

Parliamentarian - Kim Lemmon

Faculty Advisors - Kevin Rogers & Kirie Walz

### **2023-2024 Meeting Dates**

General meetings will take place in the BHS Auditorium at 6:00 pm on the following dates:

Tuesday, August 29

Tuesday, October 24

Monday, January 8

Tuesday, March 26

## **Panther Playhouse Faculty and Staff**

### **Kirie Walz – Director of Theatre**

Mrs. Walz earned a BFA in Theatre Performance from the University of Memphis. After college, Mrs. Walz taught at Germantown High School for nine years, before coming to Bartlett High School. In 2019, the Panther Playhouse's production of *Pippin* received the award for Outstanding Overall Production at the Orpheum High School Musical Theatre Awards and Mrs. Walz received the award for Outstanding Direction by a Teacher. She has worked at several theatres in the Memphis area including Theatre Memphis and Playhouse On the Square. She has received Ostrander awards for Leading Actress in a Musical in the U of M's production of *The Mystery of Edwin Drood* and in Theatre Memphis' production of *Annie Get Your Gun* and was recently nominated for Best Featured Performer in a Musical for her role in *Hairspray* at Theatre Memphis. Other favorite productions include *Elegies: A Song Cycle*, *Big River*, *Assassins*, *Noises Off*, *Parade* and *Aida*. Mrs. Walz currently teaches Intro to Theatre Honors and Standard at the Ninth Grade Academy, as well as Production Workshop Honors, and Acting Honors at Bartlett High School.

### **Kevin Rogers – Technical Director**

Mr. Rogers is currently in his 13th year at Bartlett High School serving as the Technical Director for the Panther Playhouse and the Director of Forensics. He graduated from Harding University BA in Theatre and Oral Communication. He serves as the District I Director for the Tennessee High School Speech and Drama League and is on the National Speech and Debate Association District Committee for Tennessee. In 2016, he was named a WREG News Channel 3 and Tennessee Education Lottery Educator of the Week. He also received the 2017–2018 THSSDL Krider Award for Outstanding Speech and Drama Educator of the Year. In 2022, he was inducted into the THSSDL Hall of Fame. He is also a local theatre artist having been the lighting designer for productions at Germantown Community Theatre, the Harrell Theatre, and Desoto Family Theatre where he was nominated for an Allie Award for Outstanding Lighting Design for *The Lion*, *the Witch*, and *the Wardrobe*.

### **Chris Steele – Assistant Theatre Director**

Chris Steele has been teaching English at Bartlett for over 20 years and loves it. She has a degree in speech and theatre and has enjoyed working with the students in the Panther Playhouse over the past few years. Previous credits include: *East Lynne* (Show Girl), *And Then There Were None* (Vera Claythorne) and *To Kill a Mockingbird* (Miss Maude). She loves to perform and direct. "It is so much more fun to work with such amazing talent."

### **Catie Ward – Assistant Technical Director**

Mrs. Ward previously taught Media Arts at Germantown High School and Arlington High School. Previously she served as the stage manager for Tennessee Shakespeare Company. Her TSC credits include *The Complete Works of William Shakespeare Abridged*, *It's a Wonderful Life: A Talk Radio Play*, *Macbeth*, *Southern Yuletide*, the school's tour of *Romeo and Juliet*, *The Tempest* and *The Glass Menagerie*. She was a stage management assistant for the pre-Broadway production of *The Nutty Professor* directed by Jerry Lewis. A few of her theatre credits include Studio Tenn's *The Glass Menagerie*; Chaffin's Barn Dinner Theatre's *Sherlock Holmes* and *It's a Wonderful Wife*; 3Ps Production's *John & Jen* and *Long Way Down*, *Parallel Lives*, *Oklahoma*, *Ramona Quimby, Baby*, *Spirit: The Authentic Story of the Bell Witch of Tennessee*; and Nashville Shakespeare Festival's *The Tempest*. She is a graduate of Middle Tennessee State University, where she received a Bachelor of Science in Theatre.

### **CHEYENNE DYER - CHOREOGRAPHER**

Mrs. Dyer is a Memphis native who received her Bachelor of Fine Arts in Theatre with a concentration in dance from the University of Memphis in 2018 and an M.Ed in secondary education (English) from Grand Canyon University in 2021. She is also an alum of Bartlett High School (2014). With twenty years of experience, Mrs. Dyer's love of teaching dance began at an early age from assisting at the age of twelve at the Dance Academy of Bartlett (DAB) to teaching classes beginning at the age of sixteen. Her experience encompasses various cities such as Oklahoma City, New York City, and her hometown Memphis, Tennessee. From Tap to Ballet and Jazz to Hip Hop, she has trained with professionals from all over the world while also studying their pedagogy to increase her knowledge in the field. Mrs. Dyer has received awards such as most prestigious dancer and choreographer, most innovative tap dancer and teacher, and most inspirational dancer and scholarships as well. Her past employment includes being an assistant choreographer for the High School Musical Theatre Awards (HSMTAs) and taught for their 2018 summer camp and various field trips. Currently, she serves on the board as Sergeant at Arms and chair of the Junior Ambassador program of the Southern Association of Dance Masters, is an English teacher here at Bartlett High School, and teaches dance at Joy McDaniel Academy of Dance and Gymnastics (JMAD).

### **Matthew Hayner – Musical Director**

Mr. Hayner was named Choral Director at Bartlett High School in 2021. Mr. Hayner most recently served as Choir Director at Germantown High School. Prior to that he served on the voice faculties of Rhodes College and Lausanne Collegiate School. Mr. Hayner received a Master of Music degree from The University of Memphis, where he studied with Mr. Evan Jones. He received his Bachelor's degrees from Bowling Green State University in Music Education and Performance. In the summer of 2009, Mr. Hayner studied at the Franz Schubert Institute in Baden, Austria. He was fortunate to learn from esteemed artists such as Elly Ameling, Robert Holl, Helmut Deutsch, Julius Drake, Wolfram Rieger, Rudolf Piernay, and Edith Wiens. As a singer, his operatic repertoire includes roles from *Tartuffe*, *Idomeneo*, *The Old Maid and the Thief*, *L'incoronazione di Poppea*, *Don Quichotte auf der Hochzeit des Comacho*, *The Pirates of Penzance*, *Così fan tutte*, *Die Zauberflöte*, and the North American premiere of Cavalli's *La virtù de' Strali d'Amore* at Eastman School of Music. He also performs frequently with the Memphis Symphony and Rhodes College Mastersingers- most recently in Brubeck's *To Hope*, Mozart's *Requiem*, CPE Bach's *Magnificat*, Bach's *B Minor Mass*, Vaughan Williams' *Serenade to Music*, Handel's *Israel in Egypt*, and Faure's *Requiem*. Mr. Hayner is a founding member of BealeCanto, a premier men's chamber ensemble comprised of professional musicians and educators in the Memphis area. He is also an active member of the Mississippi River Chorale, ACDA, and the National Association of Teachers of Singing (NATS).

## **International Thespian Society**

The International Thespian Society is the only theatre honor society for middle and high school students in the United States. Affiliation brings credibility and distinction to students, theatre programs, and schools. It is a visible, positive symbol of the quality of our theatre program.

Bartlett High School is home to Troupe 3618. Students must work on two mainstage productions in order to be invited for induction. The induction fee is \$40.

Active Thespians must meet the following requirements to maintain membership:

- Participate in all productions (cast or crew) and thespian activities
- Participate in all thespian fundraisers
- Attend all thespian meetings
- Maintain a "C" average in all classes
- No ISS or OSS – any member receiving ISS or OSS will have their membership up for review
- Pay annual dues of \$25 at the beginning of each school year

Seniors in good standing will receive a blue and gold honor cord to wear at graduation.

### **23-24 Student Officers**

President: Morgan Conner

Vice President: Elliott Lear

Secretary/Treasurer: Amelia Samples

Sponsor: Kirie Walz

### **TN State Thespian Conference**

Each year our troupe attends the TN State Thespian Conference in January at Middle TN State University. This is typically held the Friday and Saturday before the MLK Jr. Holiday. This is an optional field trip. Students who are inducted into the troupe or currently enrolled in a theatre course are invited to attend.

Information for this field trip will be sent home in September.



## Event Schedule 2023-2024

### August

11	2:30pm	Back to School Mixer
14-18	2:15pm	Fall Theatre Auditions
21	2:15	Trap Rehearsals Begin

### September

11-15	2:15-6:00 pm	Trap Tech Rehearsal
17	1:00 pm	Trap Performance
	5:00 pm	
18	6:00 pm	Trap Performance
19	2:15 pm	Trap Strike

### October

23-27	2:15pm-6pm	Spelling Bee Tech Rehearsals
30-31	2:15-6:30pm	Spelling Bee Dress Rehearsals

### November

1-2	2:15-6:30pm	Spelling Bee Dress Rehearsals
3-4	7pm	Spelling Bee Performance
5	2pm	Spelling Bee Matinee Performance
10-11	7pm	Spelling Bee Performances
12	2pm	Spelling Bee Matinee Performance
27-30	2:15 pm	Little Mermaid Auditions

### December

4	2:15	Little Mermaid Rehearsals Begin
---	------	---------------------------------

### January

12-13		Thespian Conference @ MTSU
-------	--	----------------------------

### February

12-16	2:15-6pm	Little Mermaid Tech Rehearsals
19-22	2:15-7:30 pm	Little Mermaid Dress Rehearsals
23-24	5:30-10pm	Little Mermaid Performance (*TBA matinee on Saturday)
25	12:30-5pm	Little Mermaid Matinee Performance

### March

1-2	5:30-10pm	Little Mermaid Performance (*TBA matinee on Saturday)
3	12:30-5pm	Little Mermaid Matinee Performance

### April

30	6pm	Thespian Inductions
----	-----	---------------------



## Trap Production Schedule

Monday	Tuesday	Wednesday	Thursday	Friday	Saturday	Sunday
AUGUST 14 Auditions	15 Callbacks	16 Callbacks	17 Callbacks	18 Callbacks	19 OFF	20 OFF
21 2:15-5:00 Rehearsal	22 2:15-5:00 Rehearsal	23 2:15-5:00 Rehearsal	24 2:15-5:00 Rehearsal	25 OFF	26 OFF	27 OFF
28 2:15-5:00 Rehearsal	29 2:15-5:00 Rehearsal	30 2:15-5:00 Rehearsal	31 2:15-5:00 Rehearsal	1 OFF	2 OFF	3 OFF
4 2:15-5:00 Rehearsal	5 2:15-5:00 Rehearsal	6 2:15-5:00 Rehearsal	7 2:15-5:00 Rehearsal	8 OFF	9 OFF	10 OFF
11 2:15-6 Tech/Dress	12 2:15-6 Tech/Dress	13 2:15-6 Tech/Dress	14 2:15-6 Tech/Dress	15 2:15-6 Tech/Dress	16 TBA AS NEEDED	17 11:30 Call 1pm Show 4:30pm Call 6pm Show
18 4:30 Call 6pm Show	19 2:15 Strike					

## 25<sup>th</sup> Annual Putnam County Spelling Bee Production Schedule

Monday	Tuesday	Wednesday	Thursday	Friday	Saturday	Sunday
September 18	19	20 2:15-5:00 Rehearsal	21 2:15-5:00 Rehearsal	22 2:15-5:00 Rehearsal	23 9-12 Rehearsal	24
25 2:15-5:00 Rehearsal	26 2:15-5:00 Rehearsal	27 2:15-5:00 Rehearsal	28 2:15-5:00 Rehearsal	29 2:15-5:00 Rehearsal	30 9-12 Rehearsal	October 1
2 2:15-5:00 Rehearsal	3 2:15-5:00 Rehearsal	4 2:15-5:00 Rehearsal	5 2:15-5:00 Rehearsal	6 TBA Rehearsal	7 OFF	8 OFF
9 OFF FALL BREAK	10 OFF FALL BREAK	11 OFF FALL BREAK	12 OFF FALL BREAK	13 OFF FALL BREAK	14 OFF FALL BREAK	15 OFF FALL BREAK
16 2:15-5:00 Rehearsal	17 2:15-5:00 Rehearsal	18 2:15-5:00 Rehearsal	19 2:15-5:00 Rehearsal	20 2:15-5:00 Rehearsal	21 9-12 Rehearsal	22
23 2:15-6:00 Tech Rehearsal	24 2:15-6:00 Tech Rehearsal	25 2:15-6:00 Tech Rehearsal	26 2:15-6:00 Tech Rehearsal	27 2:15-6:00 Tech Rehearsal	28 TBA Work Day	29 OFF
30 2:15-7:00 Dress Rehearsal	31 2:15-7:00 Dress Rehearsal	November 1 2:15-7:00 Dress Rehearsal	2 2:15-7:00 Dress Rehearsal	3 5:30 Call 7pm Performance	4 5:30 Call 7pm Performance	5 12:30 Call 2pm Performance
6 OFF	7 OFF	8 OFF	9 OFF	10 5:30 Call 7pm Performance	11 5:30 Call 7pm Performance	12 12:30 Call 2pm Performance

**The Little Mermaid Production Schedule will be released in Q2**

## **Handbook Contract**

Students who plan to participate in any production throughout the school year will need to have this contract signed annually. Please submit this page to Mrs. Walz.

I have read and agree to abide by the procedures outlined in the Panther Playhouse Handbook. I understand that non-compliance of the procedures listed in this document will be dealt with in accordance with Panther Playhouse policy.

Student Name (please print): \_\_\_\_\_

Student Signature: \_\_\_\_\_ Date: \_\_\_\_\_

Parent Name (please print): \_\_\_\_\_

Parent Signature: \_\_\_\_\_ Date: \_\_\_\_\_